

PARCEL No.	OWNER	CONVEYANCE		ACREAGE		
		CLERK'S FILE No.	FILM CODE	EXIST.	TAKING AREA	REMAINDER
P7	CLAYTON GREENS HOMEOWNERS ASSOCIATION, INC.			0.352	0.0269 AC 1172 SF	0.3251
P8	WEST OAKS FINLAY PTNR III			9.7290	0.0053 AC 231 SF	9.7237
P9	JAMES F. HARVEY AND WIFE VONDA JO HARVEY			0.1837	0.0116 AC 504 SF	0.1721
P10	ANDREW J MENDEZ AND BARBARA J MENDEZ			0.1610	0.0065 AC 283 SF	0.1545
P11	YENIFFER AYALA			0.1610	0.0022 AC 95 SF	0.1588
P12	BENITO AGUILLON AND MA ARACELI AGUILLON			0.1837	0.0042 AC 185 SF	0.1795

**OWNERSHIP RECORDING TABLE:**

**P7:**  
CLAYTON GREENS HOMEOWNERS ASSOCIATION, INC.  
H.C.C.F. NO. V291003  
F.C. NO. 543-88-1662  
O.P.R.R.P.H.C.

**P8:**  
WEST OAKS/FINLAY PARTNERS III  
H.C.C.F. NO. V574870  
F.C. NO. 548-44-0585  
O.P.R.R.P.H.C.

**P9:**  
JAMES F. HARVEY and wife,  
VONDA JO HARVEY  
H.C.C.F. NO. H156005  
F.C. NO. 186-84-1661  
O.P.R.R.P.H.C.

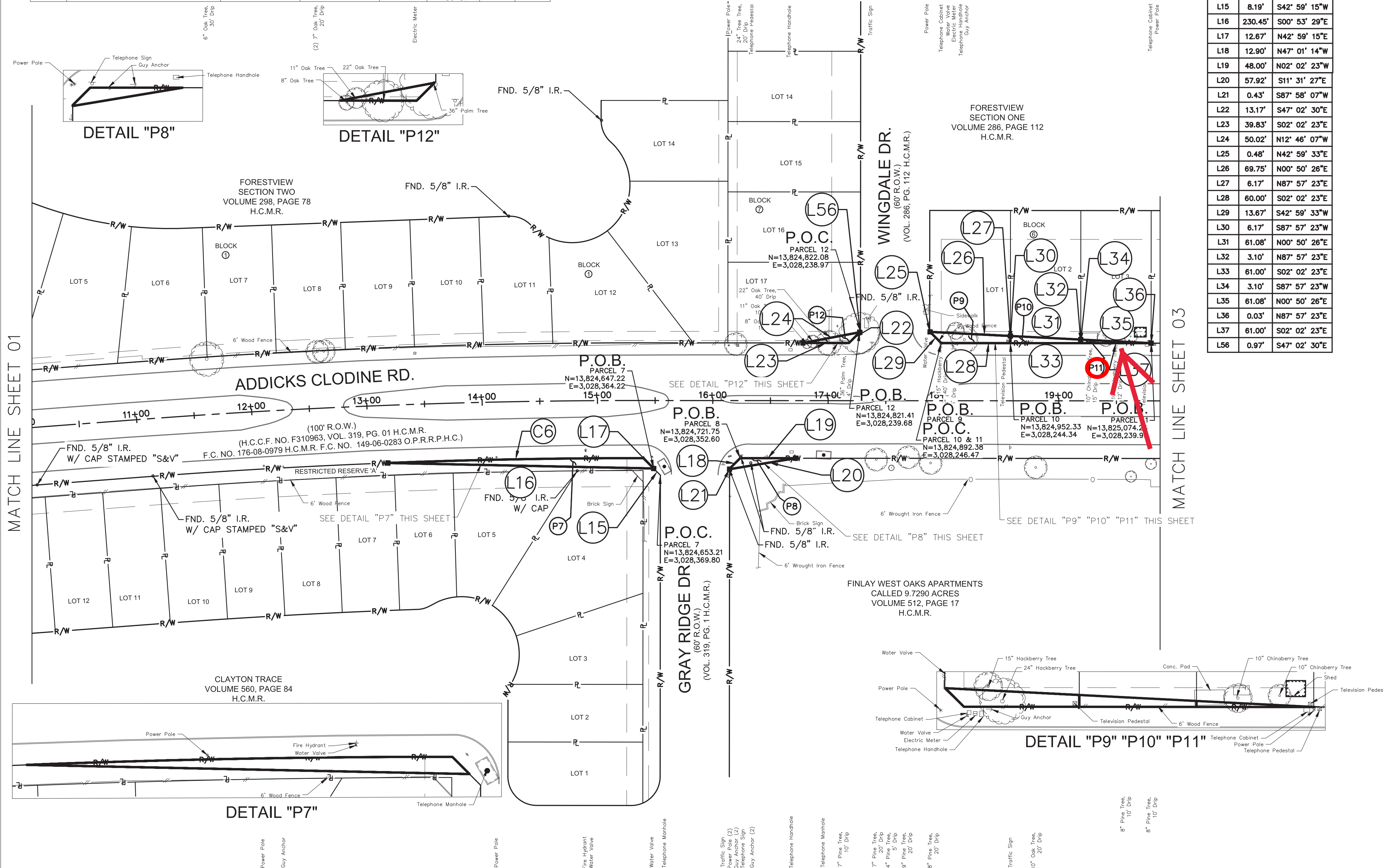
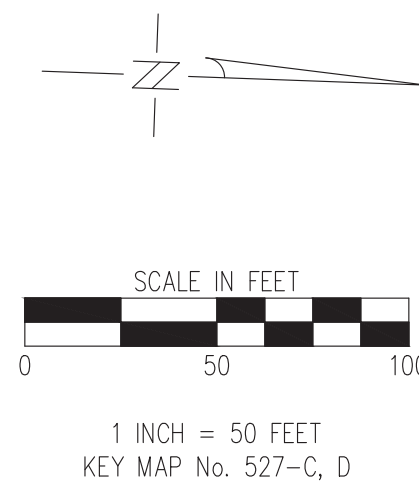
**P10:**  
ANDREW J MENDEZ AND  
BARBARA J MENDEZ  
H.C.C.F. NO. 20070012741  
F.C. NO. 037-33-1576  
O.P.R.R.P.H.C.

**P11:**  
YENIFFER AYALA  
H.C.C.F. NO. 20130502198  
F.C. NO. 049-96-0660  
O.P.R.R.P.H.C.

**P12:**  
BENITO AGUILLON AND MA  
ARACELI AGUILLON  
H.C.C.F. NO. Y537680  
F.C. NO. 886-98-2224  
O.P.R.R.P.H.C.

CURVE TABLE					
Curve #	Length	Radius	Delta	Chord Bearing	Chord Distance
C6	221.51'	5,650.00'	02° 14' 47"	N03° 09' 47"W	221.49'

LINE TABLE		
LINE #	LENGTH	DIRECTION
L15	8.19'	S42° 59' 15"W
L16	230.45'	S00° 53' 29"E
L17	12.67'	N42° 59' 15"E
L18	12.90'	N47° 01' 14"W
L19	48.00'	N02° 02' 23"W
L20	57.92'	S11° 31' 27"E
L21	0.43'	S87° 58' 07"W
L22	13.17'	S47° 02' 30"E
L23	39.83'	S02° 02' 23"E
L24	50.02'	N12° 46' 07"W
L25	0.48'	N42° 59' 33"E
L26	69.75'	N00° 50' 26"E
L27	6.17'	N87° 57' 23"E
L28	60.00'	S02° 02' 23"E
L29	13.67'	S42° 59' 33"W
L30	6.17'	S87° 57' 23"W
L31	61.08'	N00° 50' 26"E
L32	3.10'	N87° 57' 23"E
L33	61.00'	S02° 02' 23"E
L34	3.10'	S87° 57' 23"W
L35	61.08'	N00° 50' 26"E
L36	0.03'	N87° 57' 23"E
L37	61.00'	S02° 02' 23"E
L56	0.97'	S47° 02' 30"E



SYMBOLS	
[Symbol]	= AIR CONDITIONER
[Symbol]	= AERIAL MARKER
[Symbol]	= "BB" INLET
[Symbol]	= "B" INLET
[Symbol]	= BENCHMARK
[Symbol]	= BILLBOARD
[Symbol]	= "C" INLET
[Symbol]	= "C1" INLET
[Symbol]	= "C2" INLET
[Symbol]	= "C2a" INLET
[Symbol]	= CABLE PEDESTAL
[Symbol]	= CIRCLE GRATE INLET
[Symbol]	= "D" INLET
[Symbol]	= "E" INLET
[Symbol]	= ELECTRIC JUNCTION BOX
[Symbol]	= ELECTRIC MANHOLE
[Symbol]	= ELECTRIC MANHOLE
[Symbol]	= ELECTRIC PEDESTAL
[Symbol]	= UNDERGROUND TRANSFORMER
[Symbol]	= FIRE HYDRANT
[Symbol]	= GAS METER
[Symbol]	= GUY ANCHOR
[Symbol]	= LIGHT STANDARD
[Symbol]	= MAILBOX
[Symbol]	= MANHOLE
[Symbol]	= METER POLE
[Symbol]	= PIPELINE VENT
[Symbol]	= PIPELINE MARKER
[Symbol]	= POWER POLE
[Symbol]	= NUMBER
[Symbol]	= SAMPLE WELL
[Symbol]	= SHRUB
[Symbol]	= SIGN
[Symbol]	= TELEPHONE MANHOLE
[Symbol]	= TELEPHONE PEDESTAL
[Symbol]	= TEMPORARY BENCHMARK
[Symbol]	= TONE MARK
[Symbol]	= TRAFFIC CONTROL BOX
[Symbol]	= TRAFFIC SIGNAL POLE
[Symbol]	= TRANSFORMER POLE
[Symbol]	= VALVE
[Symbol]	= WATER METER

**BASIS OF BEARINGS:**  
TEXAS STATE PLANE COORDINATE SYSTEM, SOUTH CENTRAL ZONE No. 4204 (NAD 83) (2001 Adj.) THE COORDINATES SHOWN HEREON ARE GRID COORDINATES AND MAY BE BROUGHT TO SURFACE BY MULTIPLYING BY THE COMBINED SCALE FACTOR OF 1.00014583. ALL DISTANCES ARE SURFACE.

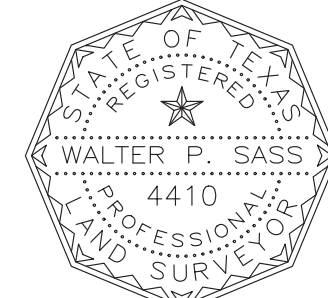
**BENCHMARK:**  
T.S.A.R.P. MON. #RM 040310. BRASS DISC STAMPED "040310" FROM THE INTERSECTION OF WESTPARK DRIVE AND ADDICKS CLODINE ROAD, TRAVEL NORTH ON ADDICKS CLODINE ROAD APPROXIMATELY 0.1 MILE TO BRIDGE. MONUMENT IS LOCATED ON THE NORTHBOUND BRIDGE. NORTHING 13,823,547.46 EASTING 3,028,427.50 NAVD88 2001 ADJ.

**NOTE:**  
THIS SURVEY IS BEING CREATED SOLELY FOR THE PARTIES HEREIN STATED; NO LICENSE HAS BEEN CREATED, EXPRESS OR IMPLIED, TO COPY THE SURVEY EXCEPT AS IS NECESSARY IN CONJUNCTION WITH THIS TRANSACTION.

○ = PROPERTY CORNERS FOUND  
■ = CORNERS SET WITH 5/8" I.R. STAMPED "WEISSER ENG HOUSTON, TX" UNLESS OTHERWISE NOTED.

ABBREVIATIONS	
C.M.	= CONTROL MONUMENT
F.N.C.	= FENCE
F.N.D.	= FOUND
H.C.C.F.	= HARRIS COUNTY CLERK'S FILE
H.C.D.R.	= HARRIS COUNTY DEED RECORDS
H.C.M.R.	= HARRIS COUNTY MAP RECORDS
I.P.	= IRON PIPE
I.R.	= IRON ROD
N.F.I.F.	= NOT FOUND IN FIELD
No.	= NUMBER
O.P.R.R.P.H.C.	= OFFICIAL PUBLIC RECORDS OF REAL PROPERTY, HARRIS COUNTY, TEXAS
P.T.P.	= PINCHED TOP PIPE
P.V.C.	= POLYVINYL CHLORIDE PIPE
R.C.P.	= REINFORCED CONCRETE PIPE
R.O.W.	= RIGHT-OF-WAY
SQ. FT.	= SQUARE FOOT/FEET
S.W.B.T.	= SOUTHWESTERN BELL TELEPHONE
TYP.	= TYPICAL
VOL. PG.	= VOLUME, PAGE

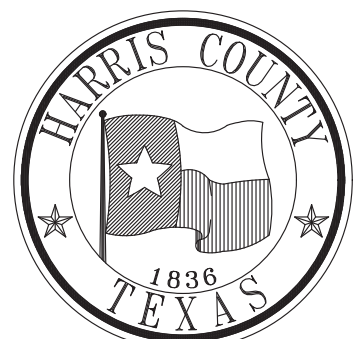
I, WALTER P. SASS, A REGISTERED PROFESSIONAL LAND SURVEYOR OF THE STATE OF TEXAS, HEREBY CERTIFY THAT THE ABOVE PLAT CORRECTLY REPRESENTS A SURVEY MADE ON THE GROUND UNDER MY SUPERVISION ON JUNE 25, 2019. THIS PROFESSIONAL SERVICE SUBSTANTIALLY CONFORMS TO THE CURRENT TEXAS SOCIETY OF PROFESSIONAL LAND SURVEY STANDARDS AND SPECIFICATIONS FOR A CATEGORY 1A, CONDITION II SURVEY AND A CATEGORY 6, CONDITION II TOPOGRAPHIC SURVEY.



WALTER P. SASS  
REGISTERED PROFESSIONAL LAND SURVEYOR  
STATE OF TEXAS, No. 4410

*BLAS HERRERA SURVEY, A-321*

HARRIS COUNTY  
ENGINEERING DEPARTMENT



**WEISSER Engineering Co.**  
19500 Park Row, Suite 100  
Houston, Texas 77084  
(281) 579 - 7300  
www.WeisserEng.com  
T&E.P. #58 T&P.L.S. #100518-00

FOR INTERIM REVIEW ONLY  
DOCUMENT INCOMPLETE:  
NOT INTENDED FOR CONSTRUCTION,  
BIDDING, OR PERMIT PURPOSES  
ENGINEER: NAME  
P.E. SERIAL No. NUMBER  
DATE: / /

PROJECT TITLE:	ADDICKS CLODINE RD. & WESTPARK RD.
DRAWN BY:	W.E.C.
CK'D BY:	J.M.
SHEET DESCRIPTION:	EXISTING RIGHT-OF-WAY AND PARCEL MAP
SCALE:	1" = 50'
DATE:	08/21/20
APPROVED BY:	
SHEET NO.:	02 / 06

NO.	REVISIONS	DATE	NAME
1.	ADDED DETAILS FOR PARCELS	10/15/20	W.E.C.